



## IMPORTANT SAFETY INSTRUCTIONS

**WARNING** – Before installing or servicing this electrical equipment, turn power OFF at the circuit breaker.

## READ AND FOLLOW ALL INSTRUCTIONS

**WARNING** – Read and follow all instructions in this owner’s manual. Failure to follow instructions can cause severe injury and/or death.

**WARNING** – This product should be installed and serviced only by a qualified professional.

**CAUTION** – All electrical wiring MUST be in conformance with all applicable local codes, regulations, and the National Electrical Code (NEC).

**ATTENTION INSTALLER** – THIS MANUAL CONTAINS IMPORTANT INFORMATION ABOUT THE INSTALLATION, OPERATION, AND SAFE USE OF THIS PRODUCT THAT MUST BE FURNISHED TO THE END USER OF THIS PRODUCT. FAILURE TO READ AND FOLLOW ALL INSTRUCTIONS COULD RESULT IN SERIOUS INJURY.

**WARNING** – Risk of Electric Shock. Hazardous voltage can shock, burn, and cause death or serious property damage. To reduce the risk of electric shock, do NOT use an extension cord to connect unit to electric supply.

**WARNING** – To reduce the risk of electric shock, the ground wire must be connected to the grounding means provided in the electric supply panel with a conductor equivalent in size to the circuit conductors supplying this equipment.

**WARNING** – Do not submerge the ColorLogic Light Controller.

**CAUTION** – Do not connect two or more ColorLogic Light Controllers together.

**WARNING** - To reduce the risk of injury, do not permit children to use this product unless they are closely supervised at all times.

**WARNING** - For indoor use only. This unit is not intended for outdoor use unless mounted in a suitable UL rated weatherproof outlet box and cover.

## Introduction

The Hayward Light Controller offers a dedicated solution for controlling your ColorLogic LED pool and spa lights from a convenient remote location. It’s designed to install into a standard wall electrical box and is wired to the high voltage side of the ColorLogic light’s transformer. Once installed, the Light Controller can be used to fully control your pool and spa lights. Turn lights on/off and change to fixed colors or shows using the Light Controller’s rotary knob and front buttons.

## Specifications

**CSA enclosure type:** Type 2, ENCL 2, or equivalent  
**Indoor electrical box:** UL recognized single or multi gang with minimum 14.0 in<sup>3</sup> volume  
**Outdoor electrical box:** UL recognized single or multi gang with minimum 18.0 in<sup>3</sup> volume

## Compatibility

The Light Controller is compatible with the following ColorLogic Low Voltage LED lights:

- Universal ColorLogic Pool LED Light
- Universal ColorLogic Spa LED Light
- ColorLogic 320, 160, 80 and 40 LED Lights

Total allowable light wattage for the Light Controller is 300 watts. A combination of various lights can be used but total wattage must not exceed 300 watts. Refer to your ColorLogic light’s power consumption when determining how many lights to use with the Light Controller. An example of combinations are shown below:

- 3 Pool Lights
- 2 Pool Lights and 1 Spa and/or Accent Light
- 1 Pool Light and 4 Spa and/or Accent Lights
- 6 Spa Lights
- 6 Accent Lights (320 model)
- Any combination that does not exceed 300 watts

**IMPORTANT:** Add the individual wattage for each light and do not exceed 300 watts.

## Before you Begin

Set your ColorLogic lights to “UCL mode” BEFORE installing the Light Controller (refer to your light’s manual). If not in “UCL mode”, the ColorLogic lights will not operate properly after the Light Controller is installed.

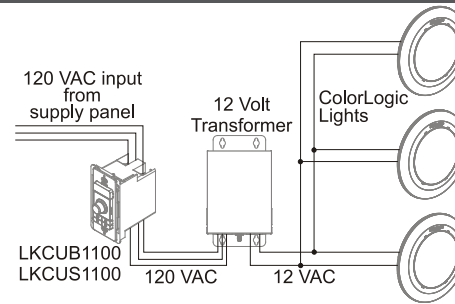
**NOTE:** The Light Controller requires a Neutral connection to operate. If retrofitting into an existing installation, make sure that the electrical box contains a Neutral connection.

## Installation

### Mounting Location

The Light Controller installs into a standard electrical outlet box. When determining a suitable location, consider that wiring from the Light Controller must connect to the primary side of the light’s low voltage transformer.

Note that the Light Controller is designed for indoor use but can be mounted outdoors if a suitable UL rated weatherproof outlet box and cover are used.

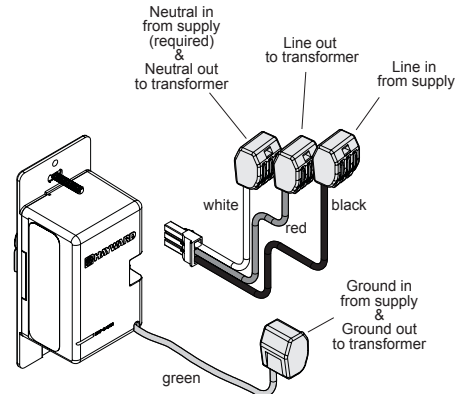


## Wiring

Lever action terminal blocks are included to aid in installation. Move levers to the fully open position when inserting wires. Close the levers to lock the wires in place.



Connect the Light Controller’s green wire to ground using a lever action terminal block that is supplied. The Light Controller comes with a plug-in wiring harness for easy installation and removal. All wiring connections should be made directly to the harness using the additional lever action terminal blocks. After wiring is complete, the harness can be plugged into the back of the Light Controller. It can then be secured into the electrical box. Refer to the following diagram for wiring connections.



## Operation

After wiring is complete, turn on power at the circuit breaker that is connected to Light Controller. The Light Controller will initiate communication with the ColorLogic lights. This may take a minute or two as the lights will cycle between colors and finally default to the Voodoo Lounge light show. The Light Controller will indicate this in the PREVIEW WINDOW.

Refer to the following information for operation and control of your ColorLogic lights.

### Onboard pushbuttons

For best results, press on the outside of pushbuttons.



**SHOW/COLOR** - this is the default mode and is used to control light shows and colors.



**SCHEDULE** - this is a programming mode and is used to set a countdown timer or schedule.



**RESYNC** - use this button to resume connection with the ColorLogic lights if communication is interrupted.



**ENTER** - use this button to confirm a selection while in SCHEDULE mode.



**CENTER KNOB** - To turn the lights on, briefly push on the CENTER KNOB. To turn the lights off, push in and hold for 3 seconds. To change a show or color, rotate the CENTER KNOB to the desired show/color and push the CENTER KNOB briefly to save.



**PREVIEW WINDOW** - this is the LCD display above the CENTER KNOB. The PREVIEW WINDOW shows the color or light show that has been selected via the CENTER KNOB. The PREVIEW WINDOW will remain on 5 minutes after the last user input.

### Off & On

Turn the lights on by briefly pushing in the CENTER KNOB. To turn off, push on the CENTER KNOB and hold for 3 seconds. The Light Controller may indicate that it’s “busy” by cycling through all LEDs in a circular pattern. This is normal operation and occurs whenever the Light Controller is busy processing a request. Let the Light Controller come out of this state before continuing.



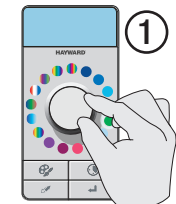
To Turn ON, briefly push the CENTER KNOB



To turn OFF, hold the CENTER KNOB for 3 seconds

### Select Color or Show

To select a specific color or show, rotate the CENTER KNOB to the desired selection. The PREVIEW WINDOW will display the desired color/show. Briefly push CENTER KNOB to save. The lights will change to the new selection.



Rotate CENTER KNOB to select desired color or show



Briefly push the CENTER KNOB to save

If you try to save the same color or show that is currently selected, the Light Controller will indicate that no change will occur by blinking LED 1 (see LED Indicator Codes) and remain in Show/Color mode.

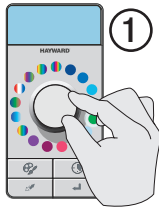
SAVE THESE INSTRUCTIONS



### Set Countdown Timer

The Light Controller offers a countdown timer function for your pool and spa light(s). When activated, the lights will stay on for a predetermined amount of time set by the user, then turn off automatically. To set the countdown timer follow the procedure below. When selecting the duration, note that each lit LED represents 1 hour. The total number of LEDs that are lit = the total duration in hours. The lights will automatically turn off at the end of the countdown duration.

The example below shows that the lights will stay on for 2 hours and then automatically shut off.



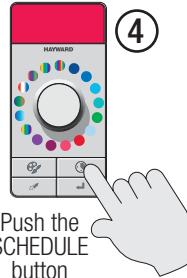
Rotate CENTER KNOB to select desired color or show



Briefly push the CENTER KNOB to save



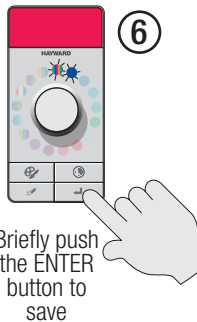
Wait until all LEDs stop blinking



Push the SCHEDULE button



Select the number of hours (each lit LED = 1 hour)



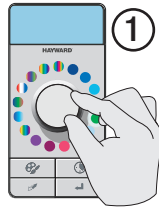
Briefly push the ENTER button to save

The Light Controller will indicate that a new countdown timer has been set by blinking LED 5 (see LED Indicator Codes) and then revert to Show/Color mode.

### Set Recurring Schedule

The procedure to set a schedule is identical to setting a countdown timer, except that the ENTER button is held for 3 seconds at the end of the procedure. Once set, the lights will turn on daily at the same time each day and stay on for the duration that was selected. If the lights are already on, they will change to the scheduled color or show.

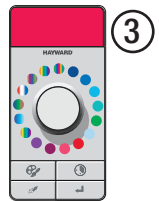
The example below shows that the lights will turn on automatically every day (beginning immediately after the schedule is saved) and shut off after 2 hours.



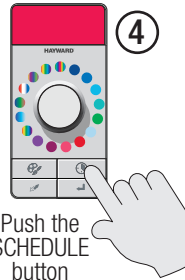
Rotate CENTER KNOB to select desired color or show



Briefly push the CENTER KNOB to save



Wait until all LEDs stop blinking



Push the SCHEDULE button



Select the number of hours (each lit LED = 1 hour)

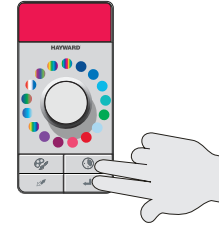


Push and hold the ENTER button for 3 seconds to save

The Light Controller will indicate that a new schedule has been set by blinking LED 4 (see LED Indicator Codes) and then revert to Show/Color mode.

### Cancelling a Countdown Timer or Schedule

The procedure for cancelling a countdown timer or a schedule is identical. Push and hold both the SCHEDULE button and the ENTER button for 3 seconds. The Light Controller will cancel the existing settings and will revert to Show/Color mode.



Push and hold the SCHEDULE and ENTER buttons for 3 seconds

The Light Controller will indicate that a countdown timer or schedule has been cancelled by blinking LED 6 (see LED Indicator Codes).

### Resync

Occasionally the Light Controller may have to be re-synchronized with the lights due to a power interruption or other type of communication error. In that case, press and hold the Resync button for 3 seconds. The Light Controller will initiate a re-synchronization process that will re-establish communication with the pool/spa lights. This may take up to 1 minute.



Push and hold the RESYNC button for 3 seconds

### Factory Reset

To clear all previous settings, press the SHOW/COLOR and RESYNC buttons and hold for 3 seconds.



The Light Controller will indicate a factory reset by blinking LED 7 (see LED Indicator Codes).

## ColorLogic® Light Controller

### Owner's Manual



LKCUS1100  
LKCUB1100

### LED Indicator Codes

The Light Controller can indicate certain conditions by blinking the front LEDs. Refer to the following conditions and their corresponding indicator codes (LED 1 is at the 12 o'clock position, LED 2 is the 1st LED after the 12 o'clock position, etc.).

Condition	Indicator Code
Same Selection	LED 1 blinking
Overload	LED 2 blinking
Busy	LED 3 blinking
Recurring Schedule	LED 4 blinking
One Time Countdown	LED 5 blinking
Timer Reset	LED 6 blinking
Factory Reset	LED 7 blinking
Processing Request	All LEDs in a circular pattern

Hayward Pool Products  
620 Division Street, Elizabeth NJ 07207  
Phone (908)-355-7995  
[www.hayward.com](http://www.hayward.com)

### Warranty and Other Languages

Refer to [hayward.com](http://hayward.com) for other languages and warranty information.